



# MUMBAI MOBILE CRECHES ANNUAL REPORT 2010-11



# TABLE OF CONTENTS

<b>I. EXECUTIVE SUMMARY.....</b>	<b>2</b>
<b>II. THE MUMBAI MOBILE CRECHES PROGRAMME.....</b>	<b>4</b>
a. Children Reached	
b. Education Programme	
i. <i>Strengthening the Education Programme</i>	
ii. <i>Enrolment of children in Municipal Schools</i>	
iii. <i>Field Trips and outings</i>	
c. Health and Nutrition Programme	
d. Community Outreach	
i. <i>Chai Pani Meetings</i>	
ii. <i>Open Days</i>	
iii. <i>Lokdoots</i>	
iv. <i>Bal Palika</i>	
<b>III. ADVOCACY.....</b>	<b>15</b>
a. Empowering Communities	
b. Builders	
c. Government	
d. Civil society	
<b>IV. ORGANISATIONAL DEVELOPMENT.....</b>	<b>18</b>
a. Institutional Strengthening Initiatives	
b. Salaries and Benefits	
c. Details of the Board	
d. Staff International Travel	
e. Staff National Travel	
f. Auditors	
g. Legal consultants	
h. Bankers	
<b>V. FRIENDS AND FUNDRAISING.....</b>	<b>21</b>
a. Volunteers	
b. Financials	
c. List of donations	
d. Names and addresses of the centres run in 2010-11	

## Photographs

Front Cover : Ava Shapiro

Back Cover Ava Shapiro

## I. EXECUTIVE SUMMARY

At MMC we are always monitoring the changes and trends in the construction industry in Mumbai and considering its effects on migrant families. This year we saw a shift in the industry as construction expanded northwards, with fewer children on each site. In response, we ran an increased number of small centres as compared to the fewer and larger centres that we had in previous years. As a result, we saw many successes in our work, as well as opportunities for the expansion and modification of our programme. While we were able to continue to run our comprehensive centres on many sites, we found ourselves having to experiment with different models of centre operations including decentralising purchases and providing only specific aspects of our programme on others. We continue to adapt without compromising on the quality of our programme; in fact we hope we will be able to strengthen it with every passing year.

The Right to Education Act (RTE) came into effect in April 2010 and we were keen to ensure that our children who were over six years old became the beneficiaries of this fundamental right. Teachers at our centres took on the enormous task of both preparing children for and enrolling them into the local municipal schools. In more challenging cases, our teachers have made use of Government resolutions to convince the schools to enroll the children – highlighting that it is not mandatory for a child to have a birth certificate to get into school. This clause has greatly benefitted many of the children living on the site, as they do not have proper documentation. We will continue to enroll our six year olds and above into local schools and will advocate for the RTE to cover children under six as well.

Last year MMC underwent an extensive evaluation by Dr. Vrinda Datta, head of the Department of Human Ecology at the Tata Institute of Social Sciences, to evaluate the effectiveness of our creche, *balwadi* (preschool) and non-formal education programmes; to appraise areas such as our training programme and community development programme; and to assess our advocacy strategy. The evaluation highlighted some very important opportunities for improving our programme and, in conjunction with the Board, we developed an action plan to implement the recommendations. The implementation has required considerable co-operation from all our staff and we have already seen changes, such as better hygiene in the crèches, improved communication among teachers and coordinators and clearer systems of monitoring the centres and staff. The benefits of these improvements are evident in the greater efficiency and quality of our programme.

The last year has been a great time of growth for our advocacy programme and we have focused on improving access to healthcare and financial inclusion for families living on the site – through a grant from the Jamsetji Tata Trust . We have begun to reach out to children beyond the construction site – through a social action research study in the slums of Mumbai supported by a grant from the Charities Aid Foundation India. Furthermore we have been expanding our reach and focus within the age group of birth to three years old, with attention on their nutrition, health and development.

We are, of course, able to do all of the work that we do because of our generous and committed supporters This year we saw a 47% increase in our corpus. We also received incredibly generous contributions from the Tata Founder's Day celebration, our “Shine On” Festival (a ten-day festival creating awareness about children and education in partnership with three other NGOs) Mr Ashok Mahadevan's Kili Fundraiser Climb and many donors who have come to us through GiveIndia, a valued new partner of MMC.

It has been an exciting and challenging first year at MMC and I feel proud to be at the helm of the organisation's work – empowering communities on the ground and working to ensure a future filled with opportunity for children living on construction sites. I extend my deepest thanks to the Board for their partnership in making MMC a strong and vibrant organisation.

Vrishali Pispati  
CEO

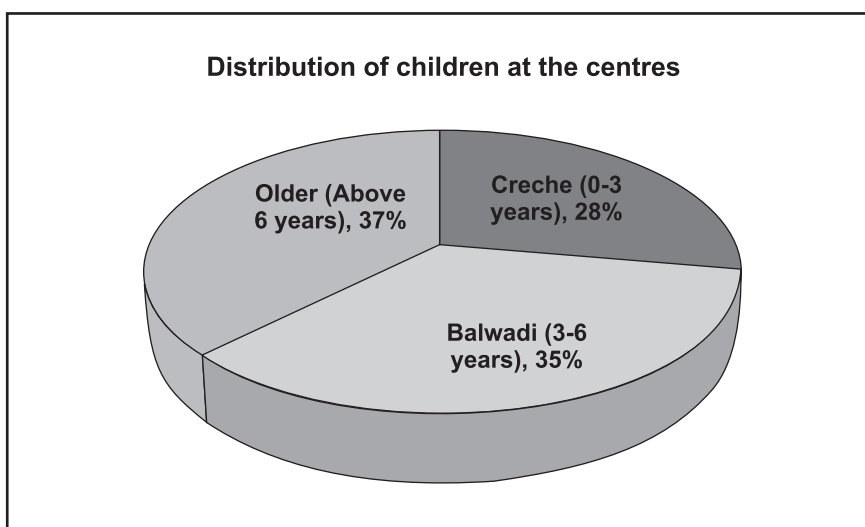


## II. THE MUMBAI MOBILE CRECHES PROGRAMME

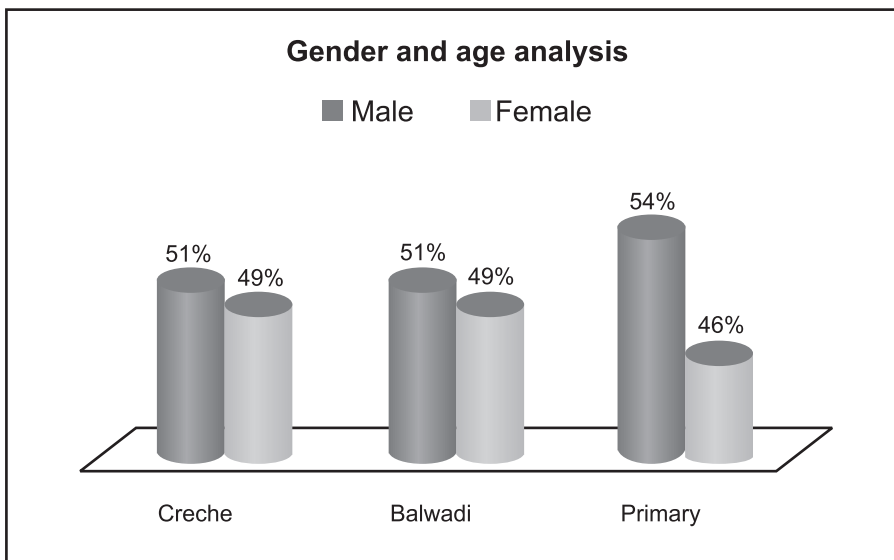
### a. Children Reached

In 2010-2011, Mumbai Mobile Creches reached a total of 5052 children through 34 centres.

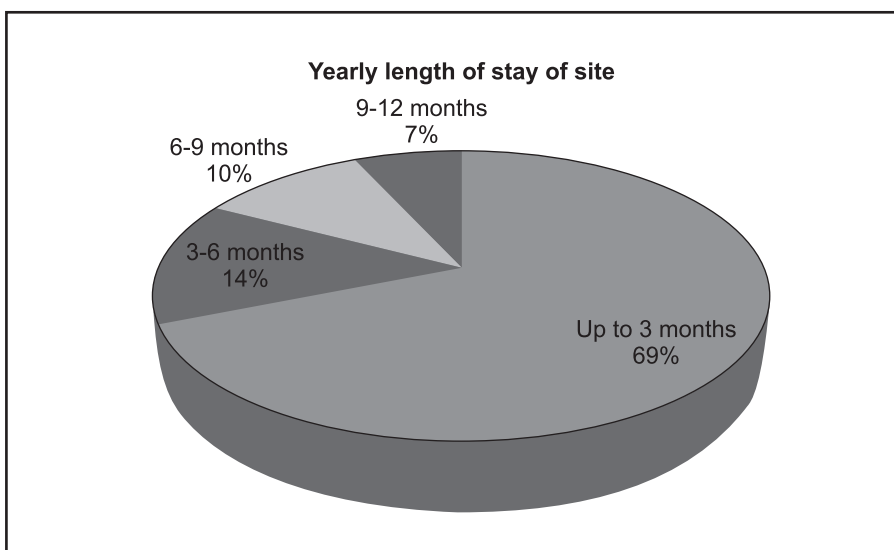
NO. OF CHILDREN REACHED IN 2010-11	
Creche (0-3 years)	1409
Pre-primary/Balwadi (three to six years)	1756
Older (above six years)	1887
<b>Total</b>	<b>5052</b>



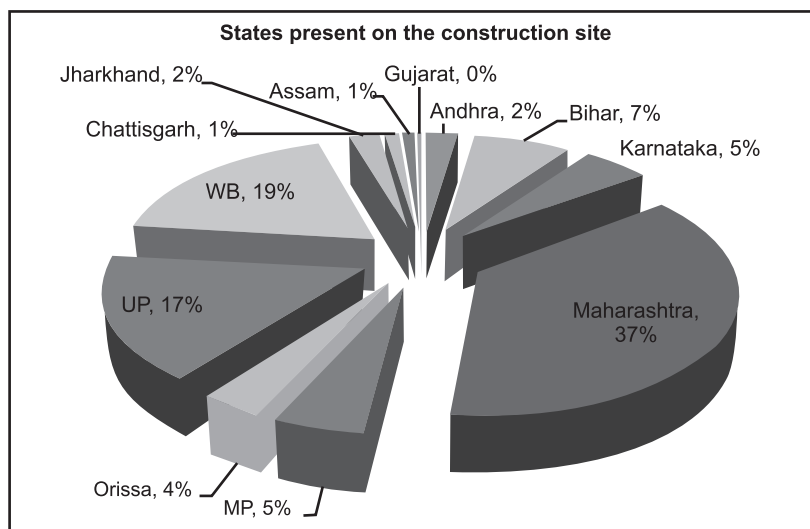
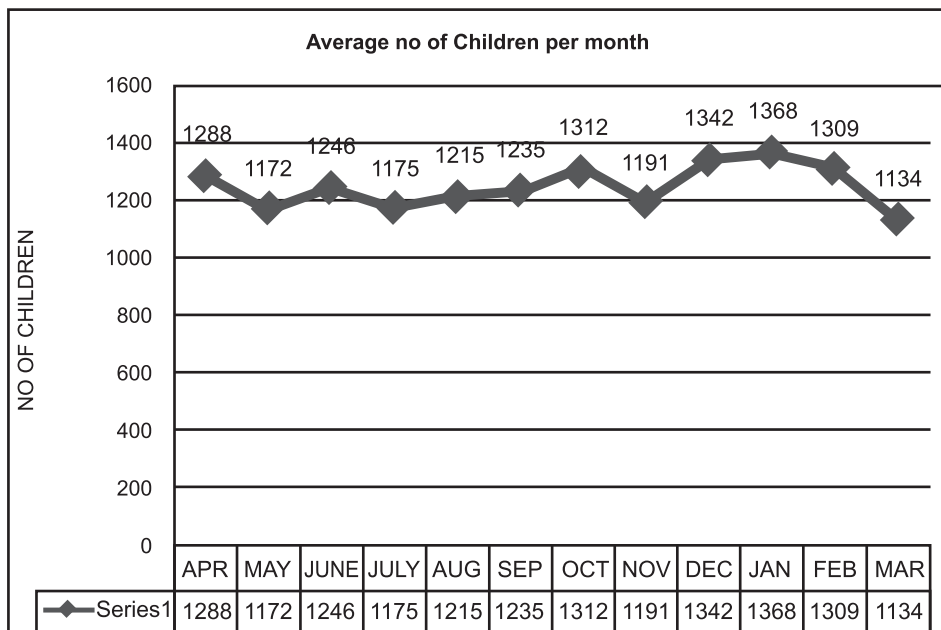
As in previous years, in 2010-11, the majority of our children, around 63%, are below six years of age. However, while the number of children attending the crèche has gone up by about 3% this year, only 11% of the children are younger than 6 months as against 16% last year. This indicates a possibility that more women now take time off from work after delivery and stay at home to care for the babies. We see this as a positive trend, since it also helps promote breast feeding among the 0-6 month olds, which is something we have always advocated.



It is significant to note that as the children grow older the number of boys increase, and the number of girls dip. Girls constituted only 46% of the primary class as against the 54% who were boys. This reflects the practice of adolescent girls dropping out of school to take up household chores or parents leaving older children, especially girls, in the villages with the extended family.



Approximately 70% of the children on our rolls attend our centres for only three months. Constant migration of children from one site to another poses a big challenge in designing a curriculum that would benefit all the children at our centres. Our 15 week curriculum which was rolled out this year is designed to tackle the high turnaround of children. A detailed note on this programme can be found under the section “Strengthening the Education Programme”.



Three years ago, MMC began analysing socio economic information about the children and their parents, in an effort to gain a better understanding of the community we serve. Collecting such vital information has helped us analyse critical parameters like the length of stay of families on the construction sites, which has greatly impacted the way we approach our educational curriculum. As part of this exercise, we have also been studying the states of origin of the families, to understand the various corridors of migrations on the construction sites in Mumbai. The construction site is a melting pot with over 10 states being represented on a site. The western region showed the largest migration on the sites where we operated. Over 37% of all migrants came from Maharashtra. About 32% of the migration was from the northern states of UP, Bihar, Jharkhand, Chhattisgarh and Madhya Pradesh. West Bengal contributed approximately 19% of the population at our centres

## **b. Education Programme**

### ***i. Strengthening the Education Programme***

Last year we took on the challenge of addressing the growing demand for including English in our non-formal education programme. With the support of Pratham Mumbai Education Initiative, all our teachers took part in a six day training to learn basic English and to implement the programme at all MMC centres. Now, every afternoon you will find our teachers leading a thirty minute English session for all children above six years old. The easy to use teaching calendar allows our teachers to lead the children step by step through the basics of the English language. We look forward to sharing the joy of the children's progress.

In December we inaugurated the first annual Book Week at all MMC centres. Teachers conducted creative lessons to improve children's reading skills and the children participated in child to child programmes with different schools. The construction community took part as well, as parents and siblings listened to their junior family members reading newspapers and books in the centres. The Book Week focussed on cultivating a love of reading in our children.

As a sustainable follow up to the Book Week, MMC centres formed lending libraries from donated books. Students are now able to take out books on Tuesdays and Thursdays and return them when they are done. So far the children have greatly enjoyed being able to take the books to their homes to share them with their families. We hope to expand our libraries in the coming years and to continue to encourage our children to read. We thank all those who contributed in various ways to make our first annual Book Week a huge success.

Early last year, our primary education coordinator made a shift in our primary classes by dividing the children into colour groups according to academic levels and introduced a 15 week programme. Approximately 70% of MMCs students attend the centre for only 3 months, making it very difficult to run a conventional education programme. Children are now grouped according to their basic competency (lettered, or unlettered) and the planned educational curriculum is imparted to the groups in 15 weeks, after which they are assessed. Children who demonstrate progress in the test are advanced to the next group and introduced to more concepts. This move has enabled the teachers to organise their time and focus better, and has allowed the children the opportunity to learn at the level that suits them best. We are continuously improving the curriculum and creating lessons that are suitable for children who come to us with different academic exposures. Our teachers shift children into different colour groups as their skills improve and we are constantly evaluating the children's progress. For the Primary age children, our goal, of course, continues to be to enroll them into the local municipal schools.

## *ii. Enrolment of Children in Municipal Schools*

As we reported last year, in April 2010, the government began the implementation of a monumental piece of legislation – the Right to Education Act (RTE) – ensuring universal education for children from six to fourteen years. This marked an incredible opportunity for us to expand our advocacy for the rights of children living on construction sites and to partner with other organisations working with migrants. We have made great efforts to ensure that migrant construction workers' children are not marginalised from the benefits of the RTE due to their constant movement.

In the past year we have continued our push to enrol primary age children into schools. Our primary teachers work hard to prepare our students to sit the entrance exams and to have the opportunity to enter a local municipal school. In 2010, we helped enrol 525 children – our highest ever - into their neighbourhood municipal schools. Our work with the children, however, does not stop once they are enrolled in school. We know how important it is to provide academic support to these children as they move through their schooling experience, so we offer tutoring after school hours to such students. Last year, 34 children from 8 centres received scholarships and stipends to pursue higher education.

### *Concrete steps to a bright future*

When Mahesh Madhukar's father left their family, his mother needed another wage earner in the house to support the family of four. She took her son, 11 year old Mahesh, out of school and helped him find a job. MMC teachers at our Global City Centre learned of the situation and discussed it with his mother, urging her to reconsider her decision. Although she resisted initially, finally she agreed to send Mahesh to the MMC centre and we were able to enrol Mahesh in a nearby municipal school.

This is what Mahesh had to say about the situation:

*I really like to study. I don't like to work. I tell my mother that I want to go to school and do better in life. I tell her that if I study, then I will earn better than this in life. But she tells me that your father is not here, there are three mouths to feed – where will I get the money from to send you to school? I feel sad, teacher, for my mother, but I can't help her now. I must go to school and I thank you for convincing my mother to let me go to school.*

Mahesh is now in the fifth standard in the local BMC school and is doing extremely well. His teachers say that he is a smart, happy and enthusiastic child. His mother still occasionally considers putting him to work but Mahesh stubbornly refuses to go. Even at such a young age, Mahesh sees the valuable role that education will play in his life and the improvement of his family's long-term well-being that it will bring.



### *iii. Field trips and outings*

At MMC we strongly believe in hands-on learning and hands-on experience. To supplement our classroom teaching, we take the children on a number of educational outings throughout the year. These outings are correlated with the children's monthly education topic and allow them to expand their experiences outside the construction site – going to the zoo to see different animals, exploring flora and fauna at the Nehru Science Centre or visiting a local library to have exposure to the plethora of knowledge that exists on various topics. We encourage corporate and institutional partners to sponsor outings and participate in them, so that they have the opportunity to interact with the children.

Below is a selection from the monthly calendar of outings in 2010-11:

- **April** – 15 children from Agripada Centre participated in a drawing competition organised by the **Nehru Science Centre**.
- **May** – 25 children from Nahar Centre visited the Powai Police Station where they met Sub-Police Inspector, **Mr. Damodar Satpute**. During the exposure visit, Mr. Satpute explained his job and responsibilities and the children were given the opportunity to ask questions as well. The event was organised by S' Prayas an initiative of Syntel Corporation and we are grateful for their efforts.
- **June** – 60 children from Ganesh Nagar, Ashok Nagar and Veera Desai Centres participated in a Disney World celebration at Inorbit Mall, Malad, organised by **Concern India Foundation**.
- **July** – 30 children from Chandivali and Nahar Centres visited the **Syntel** office to learn about the importance of water conservation.
- **August** – 28 children from Veera Desai Centre visited their **Gundecha Symphony** site canteen to learn more about nutrition and healthy cooking.
- **September** – 398 children from 22 centres attended a Ganesh festival hosted by the **Neptune Group** at their Bhandup site. All were treated to a delicious lunch, enjoyed participating in games and dancing to music with a DJ.
- **October** – 20 children from Agripada Centre visited the **Dr. D.Y. Patil International School** in Worli and celebrated International Food Day with the 4<sup>th</sup> grade students. The students' parents cooked with the children and the children watched a film on food and nutrition.
- **November** – 30 children from Ashok Nagar Centre visited the Borivali National Park with employees from **KPMG** and enjoyed playing outdoors, exploring the flora and fauna.
- Over 200 children from our centres enjoyed a day of outdoor sports courtesy Rajhans Vidyalaya. We thank the Principal, Mrs. Deepshikha Srivastava for organising a fabulous event for our children.

- **December** – 377 children from all MMC centres enjoyed two days of fun and games at our **annual children's camp in Marve!**
- **January** – 40 children from Elanza and Ganesh Nagar Centres visited Liberty Garden at Malad, sponsored by **GiveIndia**.
- **February** – 40 children from Patlipada Centre participated in partner NGO, **Magic Bus'** annual sports tournament at BPT grounds in Sewri.
- **March** – 30 children from Agripada Centre participated in a day of sports at **Fazlani L'Académie Globale**.

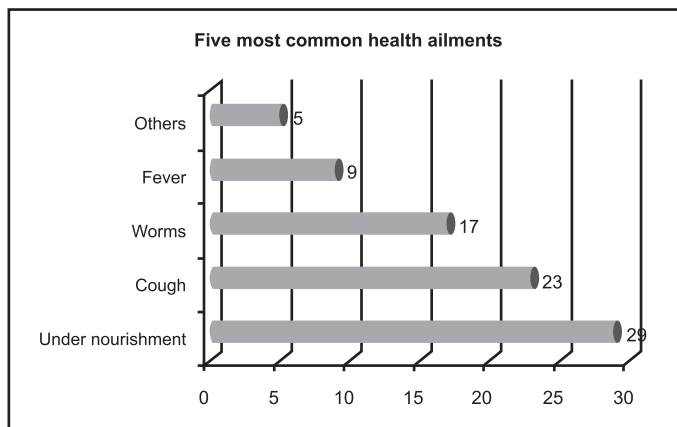
### c. Health And Nutrition Programme

Our health and nutrition programme focuses on bringing children into a healthy and positive environment where preventative health care is a key feature. We have weekly doctor's visits and the children receive regular checkups and medication to ensure that they are healthy and fit. Additionally, we work with local health centres so that the children receive the full and appropriate cycle of immunisations.

#### Medical Cases Treated for Year 2010-11

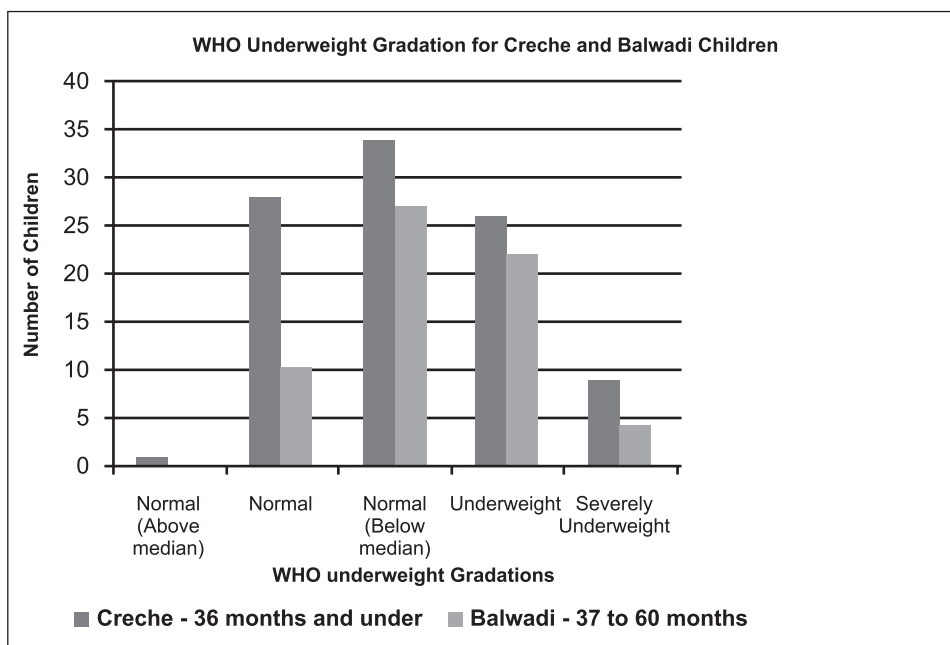
Illnesses	Incidence	%
Cough	1370	23
Fever	525	9
Anaemia	103	2
Worms	977	17
Malaria	42	1
Gastrointestinal problems	226	4
Skin Infections	156	3
Pneumonia	21	0
Wounds	269	5
Under nourishment	1687	29
Others	272	5
Specific Illness	240	4
Very serious: hospitalised	21	
	<b>5909</b>	

Vaccinations Facilitated		%
BCG	497	7
Triple Polio	437	6
DPT	167	2
Pulse Polio	4865	71
Measles	273	4
Booster	211	3
Vitamin A	414	6
	<b>6864</b>	



As the chart here indicates undernourishment is the most common ailment at our centres. This year we undertook a research to study the reasons for the high incidence of undernourishment among children on construction sites and analyse the impact of MMC's nutrition programme on these children. As part of this research a pilot study was undertaken using the data of 161

children across three centres. This consisted of 70 males and 91 females, all five years of age or younger.



Through this research we found out over 80% of the children gained weight once they started attending our centre on construction sites.

Data also revealed that there is greater incidence of underweight among preschool children (4-5 years) than crèche babies (3 years and under). 40% of the older age group were either underweight or severely underweight, compared to 36% of crèche babies. This is similar to the trend across India (as illustrated in the findings of UNICEF's study on underweight in India), where stunting and underweight prevalence tend to be higher among children in older age groups.

Case studies of children at these centres further revealed that reasons such as the migrant nature of the families, low birth weight, existing illnesses all play an important role in nutritional status of children. The study has given us an insight into the nutrition programme and will serve as a background for future work on building the nutritional aspect of our programme.

### ***Building a healthy childhood***

One year old Aarti is one of four siblings and when she started coming to MMC's centre at Powai, Mumbai, she was identified as underweight, weighing only 6 kgs. Aarti was under observation, with the teachers and the MMC doctor monitoring her weight chart every month. Following the MMC Doctor's recommendations, teachers introduced Aarti to a special diet so that she could gain weight. Aarti's health began to improve with the extra egg and multivitamins. Whereas previously she used to be generally inactive and quiet, now teachers say she is "up and peppy", dancing to music and playing with other children. She has even begun to call out to the teachers by their names and loves eating independently, with a much heartier appetite.

As in most cases we observe, despite the efforts of Aarti's parents to ensure that she is healthy, the constraints of providing for a large family can negate their success. This is where MMC's health and nutrition programme is vital, in order to ensure that hardworking parents can look after all their children without compromising the healthy growth of any of them, or neglecting their own work.

Finally, with support from partner NGO, Ummeed, we now have a second fully trained Special Needs Coordinator, Ms Sangeeta Sadaphale who went through a rigorous six month training in developmental milestones of differently abled children. She rejoined our team in February and along with Ms Rajkumari Yadav coordinates all our work with children who have special health and other needs. She visits centres regularly, coordinates with hospitals and their social work departments, counsels parents, and supports our teachers' work with these children.

The past year we have also worked closely with many foundations, hospitals and institutions to further our health programme. The following organisations have been part of the health initiative this year:

Ali Yavar Jung National Institute For The Hearing Handicapped, All India Institute Of Physically Handicapped, Haji Ali, Mumbai, BSES MG Hospital, B.Y.L. Nair Charitable Hospital, Dr. Nitin Mokal, Smile Train Foundation, Health Departments- BMC, NMMC, TMC, Jyoticare Benevolent Foundation, K. B. H. Bachooali Charitable Ophthalmic & E.N.T Hospital, King Edward Memorial Hospital, Larsen & Tubro Health Centre, Lokmanya Tilak Municipal General Hospital, Mumbai District AIDS Control Society, Rajawadi Hospital, Sushrusha Hospital, Umeed Child Development Centre.

We look forward to continuing these partnerships and are very appreciative of their support.

### *Smiling her way into the future*

Born with a cleft palate and a cleft lip, Ashwini joined our MMC centre in Powai in November, 2009. Her parents were concerned because as she was growing, Ashwini was having great difficulty eating and speaking. She was extremely shy and withdrew from the other children in the centre, lacking the self confidence to interact with her peers. At age seven, the MMC centre was Ashwini's first experience of going to school and it was a great challenge for her, with her disability. The regular weekly doctor's visit to our centre was the first medical attention that Ashwini received and our doctor recommended that she have the cleft operated immediately. Our community health coordinator began working with Ashwini's family and interacted with other organisations to work on her case. MMC partnered with the Smile Train Foundation and Ashwini was operated on in May 2010. Following the surgery and recovery, Ashwini returned to the centre with a lovely smile and a new sense of self confidence!

### *Vasanti 'eyes' a bright future*

Nine year old Vasanti Bera is a happy child today. She is a confident girl who enjoys playing outdoor games with her friends, and has not missed a single day at the municipal school. Vasanti had a different story to tell last year. Vasanti was born with 'Strabismus', a condition where the eyes are misaligned. The condition not only affected her vision, often confusing her with multiple images, but also severely dented her self confidence. She recoiled into a shell and rarely interacted with children her age. When Vasanti joined our centre in Thane in April 2010, the teachers there recommended her case to MMC's health coordinator Rajkumari Yadav. When Rajkumari mentioned to Vasanti's parents that an eye surgery would completely change her appearance, they were terrified. It took many counselling sessions for Rajkumari to convince them that the procedure would be safe and correct her condition. After months of persuasion, in August 2010, Vasanti underwent a corrective eye operation at K. B. H. Bachooali Charitable Ophthalmic & E.N.T Hospital.

MMC's timely intervention has restored Vasanti's self confidence and has ensured that she enjoys her childhood. The operation mitigated the potential vision problems and further social ostracism she would face once she grows up. MMC's efforts have also impacted the mindset of her family and the entire community.

A heartfelt thank you to our panel of doctors – Dr. Agashe, Dr. Jain, Dr. Joglekar, Dr. (Mrs.) Joglekar, Dr. Kawatkar, Dr. Mulye, Dr. Patil, Dr. Purandare, Dr. Suru, and Dr. Takkar – who continue to provide incredible care and support to our children and to our health programme.



## **d. Community Outreach**

### ***i. Chai Pani Meetings***

Once a month children excitedly lead their parents into our centres for our chai pani meetings. These meetings are a great opportunity for parents to spend time at the centre and to discuss various topics of interest to the community. Every month over 400 parents join us for these meetings.

### ***ii. Open Days***

MMC is always looking for ways to reach out to parents to include them in their children's educational experience. We have found that one-on-one meetings are a great way to engage parents, and that learning about their children's progress encourages them to put a greater stake in their education and attendance at the centres. We hold open days once every three months for children in every section of the centre and about 400 parents attend these meetings every month.

### ***iii. Lokdoots***

In the last year, we reinvigorated the *lokdoot* or street play programme, training the next generation of *lokdoot* performers and working on the costumes and music. We have also increased the number of *lokdoots* performed in the evenings on the construction sites. The *lokdoot* continues to be an effective form of disseminating information as well as stimulating dialogue in the community. This year we performed 17 *lokdoots* and reached over 4400 women, men and children living on construction sites.

### ***iv. Bal Palika***

In August 2010, 15 trainees of MMC's Bal Palika – our year long early childhood care and education training programme – completed their training and became certified child care workers. Of these 15 graduates, 10 are women living on construction sites. They join the ranks of over 1000 women who have graduated from our programme and are now employed by various schools, NGOs and day care centres, including the MMC centres. We see the women in our Bal Palika programme as the change makers in the community and we encourage them to take ownership and leadership in the MMC programme.

### *Failure, a stepping stone to success*

Rina Jadhav had made several unsuccessful attempts to clear her grade 10 examinations before she heard about MMCs training programme, Bal Palika. She enrolled in the training since she had lost all hope of clearing grade 10. Once into the programme, Rina found herself interested in the theory sessions, and enjoyed studying, something she had never experienced before. She finished her training programme and was employed as a teacher at one of our centres in Ulwa, Navi Mumbai. However, the fact that she was unsuccessful in completing her grade 10 continued to disturb her immensely. With her new found confidence, she studied hard and appeared for the exams, and passed, narrowly missing a distinction! Rina takes great pride in having completed the 10th grade and has now set her eyes on becoming a graduate. MMC obviously is very proud to have teachers like Rina who are true advocates of our training programme.

## III. ADVOCACY

### a. Empowering Communities

MMC's *Sakhi* federation was established in April 2009, initiated by women who had completed our *Bal Palika* training programme as a mechanism to support one another and to reach out to women in the community. Following its inception, the federation began two self-help groups (SHGs) – *Samruddhi* and *Pragati* – with the intention of starting group bank accounts, encouraging savings learning accounting, exploring possibilities for income generation, and of creating sustainable livelihoods. Both SHGs successfully opened bank accounts and have begun to save Rs. 100 per member per month. The women continue to meet on a monthly basis to explore ways in which they can be more entrepreneurial and to consider other appropriate livelihood options. Mahila Arthik Vikas Mahamandal (MAVIM) has been instrumental in providing support to the group during its inception period, and we would like to thank them for it.

The formation of the *Sakhi* federation prompted us to apply for funding from the Jamsetji Tata Trust, under the Tata Trust migrant support programme, for a survey to gain a deeper understanding of the issues facing the migrant construction community. We found that financial inclusion and access to government services, including healthcare and ration cards, were major challenges for the community. In response to these challenges, the MMC advocacy team went to work on a number of these issues and achieved great success. Notably, the team ran nine health camps on construction sites; conducted 17 *lokdoot* (street plays) on various issues such as health, financial inclusion and education, and facilitated the issuance of 84 PAN cards. This project has given MMC the opportunity to build relationships and trust with the communities with whom we work and to begin to understand the long-term advocacy efforts we need to undertake to tackle the complex issues they face. The development of this strategy will continue to be an important aspect of our work on the site.

## b. Builders

With gratitude and appreciation we thank our main partners, the builders for supporting our programme again this year for the children living on their construction sites:

Ackruti City Ltd, B.G. Shirke Construction Technology Pvt Ltd, B.E Billimoria & Co Ltd, Chalet Hotels Ltd, CIDCO Ltd, Conglome Construction Techno Pvt Ltd, Gennext Hardware & Parks Pvt Ltd, Gundecha Builders, Hiranandani Constructions, Kalpataru Limited, K. Raheja Corp Pvt Ltd, K. Raheja Universal Pvt Ltd, Keystone Realtors Pvt Ltd, Lake View Developers, Lodha Group, Mayfair Housing, Nahar Enterprises, Neha Home Builders Pvt Ltd, Neo Pharma Pvt Ltd, Neptune Group, Powai Developers, Rockline Developers Pvt Ltd, Roma Builders Pvt Ltd, Rustomjee Evershine Joint Venture, Shivalik Ventures Private Limited, Shree Sainath Enterprises, Shriram Land Development, Serene Properties Pvt. Ltd, and Vascon Engineers Ltd

As compared to 2009-10, we saw a decline in the number of children at our centres in 2010-11. Unavailability of sand, due to several policy restrictions slowed construction work on many sites. Work was stalled on certain sites compelling workers to head home or on to other sites leaving fewer children at the centres.

<b>Number of Sites Surveyed</b>		<b>18</b>
Total Number of Children		784
Number of Centres Opened		11
<b>Existing Builders</b>		<b>8</b>
	Who Called Us	7
	Whom We Called	1
<b>New Builders</b>		<b>4</b>
	Who Called Us	3
	Whom We Called	1

## c. Government

Last year we reported on the success of the nutrition programme at our centres where we partner with the Integrated Child Development Scheme (ICDS). We continue to run two centres with ICDS and are hoping to expand our work with them. There is great potential for the growth and cohesion of our programmes, bringing health, nutrition and education to more children living on construction sites.

#### **d. Civil Society**

Over the years we have developed an expertise on many issues in the field of early childhood education and care. Increasingly, as a part of the expansion of our advocacy efforts, we look to share our expertise with individuals, organisations, government and academic institutions working in the same field through workshops and information sharing activities. In 2010-11, we took part in the following training programmes and workshops:

- Following a training with Bala Mandir Research Foundation in September 2010, we collaborated with the Association for Early Childhood Education and Development to conduct a two part training on parenting for 18 trainees from various NGOs, such as the Salaam Balak Trust, Smiles Fun School, Life Trust, IWSA, the Door Step School and AAWC in November 2010 and February 2011. The workshop focused on heightening awareness about parenting skills for the trainees back to their communities.
- Over 150 students from 18 education institutions across Mumbai undertook internships at our centres.
- Over 500 people from 14 different organisations took part in 14 workshops on teaching aids, conducted by our programme staff. These workshops focussed on the use of puppets as low-cost teaching aids, made from recycled materials.

We make a great effort to participate in city-wide campaigns and coalitions with local NGO partners on issues related to child labour, education, nutrition and health. This year we took part in the following:

- **Charities Aid Foundation India**

With a generous grant from Macquarie Bank through Charities Aid Foundation India we initiated a research project in partnership with the Association for Education and Early Childhood Development in an effort to explore the existing options for child care in low socio-economic communities in Mumbai. Since January, the research team has been conducting interviews, surveys and focus group discussions with women in five low-income communities across five zones in Mumbai. Once the research is complete, we will make a presentation on our findings, work with existing child care givers to improve their skills and train interested community women to become child care givers. We look forward to keeping you updated on our work as it progresses.

- **National Coalition of Organisations for the Security of Migrant Workers**

In July 2010, we joined the National Coalition of Organisations for the Security of Migrant Workers, a new coalition comprising of over 20 civil society groups from across India. The coalition was formed to advocate for the inclusion of migrant workers into

mainstream systems and services. The coalition's first action was to sign a memorandum of understanding with India's Unique Identification project. The coalition's main aim is collaborate and advocate for better services for the millions of underserved migrant workers in India.

- **Ummeed**

Last year Ummeed, a local NGO working with special needs children, trained our special needs coordinator, Ms. Rajkumari Yadav. This year Ms. Sangeeta Sadaphale undertook the training and now joins our team working with special needs children.

- **Child to Child**

This programme gives MMC children and children from elite schools in Mumbai the opportunity to exchange information and share experiences at the MMC centres and the schools. This year we increased the number of child to child exchanges in an effort to create avenues for our children to cultivate a sense of leadership and self-confidence and also to encourage a mutual understanding with other children in Mumbai. MMC has collaborated with École Mondiale World School, (in coordination with Robin Age, a children's newspaper) and with the American School of Bombay and Fazlani L'Académie Globale to hold exchanges such as library visits, field trips and other collaborative programmes.

## **IV. ORGANISATIONAL DEVELOPMENT**

### **a. Institutional Strengthening Initiatives**

- We received a registration number under the Foreign Contribution (Regulation) Act, 1976, allowing our foreign donors to contribute to our organisation without having to apply for prior permission to do so. This has removed difficulties in the way of donors from abroad sending us funds.
- The Board passed a Child Protection Policy in December 2010. All our staff received training to enable them to understand the Policy and everyone who interacts with our children must read and sign a copy of the Policy.
- Dr. Vrinda Datta completed her work on the evaluation of our programme and we have begun to implement her recommendations. We are already seeing vast improvements in the quality and efficiency of our programme.
- We hired Research Coordinator to initiate a social action research project beyond the site.



## b. Salaries and Benefits

<b>Chief Executive Officer (Annual)</b>	Rs. 455357		
<b>Three Highest Paid Staff Members (Annual)</b>	Rs. 455357	Rs. 265945	Rs. 227104
<b>Lowest Paid Full Time Member (Annual)</b>	Rs. 41934		
<b>Monthly Salary and Benefits (Rs.)</b>	<b>Male</b>	<b>Female</b>	<b>Total</b>
<b>Less Than 5000</b>	1	44	45
<b>5000 - 10,000</b>	9	58	67
<b>10,000 - 25,000</b>	1	6	7
<b>Above 25,000</b>	0	1	1

## c. Details of the Board

### Members

	<b>Name</b>	<b>Age</b>	<b>Position</b>	<b>Occupation</b>
i	Ms. Mrinalini Kochar	78	President	Social Service
ii	Ms. Nalini Chhugani	73	Secretary	Education Specialist
iii	Mr. Ashok Mahadevan	62	Treasurer	Journalist
iv	Mr. Raghavan Shastri	58	Director	Company Executive
v	Ms. Vaishali Deodhar	54	Director	Social Service
vi	Ms. Saroj Satija	74	Director	Social Service
vii	Ms. Eva Runaganadhan	63	Director	Social Service
viii	Ms. Devika Mahadevan	33	Director	Social Service

Of the eight Board Members mentioned above, two are related. Mr. Ashok Mahadevan, Treasurer is the father of Ms. Devika Mahadevan, Director.

No remuneration in any form has been paid to any Board Member during 2010-11.

## Number of Board Meetings held in 2010-11

Date	Attendance
25 <sup>th</sup> June 2010	4/8
24 <sup>th</sup> July 2010	7/8
4 <sup>th</sup> September 2010	7/8
9 <sup>th</sup> October 2010	4/8
18 <sup>th</sup> December 2010	6/8
5 <sup>th</sup> March 2011	8/8

### d. Staff International Travel

No international travel was undertaken during the financial year 2010-11.

### e. Staff National Travel

Name and Designation	Destination	Purpose	Expenditure
Pradeep Shinde, Advocacy Officer	Ichalkarnji	Attend Coro Programme	Rs. 1027
	Udaipur	Meeting with coalition on U.I.D. Project	Rs. 10137
	Bhopal	Networking with other NGOs	Rs. 4740
	Lucknow	Source area visit for J.T.T. Project	Rs. 5186
Katta Babu and Taramati Padwal, Assistant Programme Coordinators	Nagpur	Conduct puppet making workshop	Rs. 2242
3 Staff Members	Ahmedabad & Udaipur	Visit and learning for J.T.T. Project	Rs. 9130
9 Staff Members	Chennai	Attend a workshop on parenting	Rs. 12485
4 Staff Members	Nasik	Exposure visit for J.T.T. Project	Rs. 9766
3 Staff Members	Nasik	Exposure and networking with other NGOs	Rs. 1906
4 Staff Members	Latur Yavatmal Parbhani Pune	Source visits for J.T.T. Grant  Networking with other NGOs	Rs. 5294 Rs. 7374 Rs. 7194 Rs. 4673
4 Staff Members	Chinchwad	To conduct puppet making workshop	Rs. 1468

**f. Auditor**

V.K. Godbole, Chartered Accountant. 802, Jayant Apts, Girgaum, Mumbai 4. Membership No: F7304

**g. Legal Consultants**

Bharat G. Goyal, Advocate. 202 Mangal Ashirwad, Santa Cruz (W), Mumbai 54

**h. Bankers**

UCO Bank, Madame Cama road, Mumbai-400 039

ICICI Bank Ltd, Mumbai Fort Branch, Navasari Building, 24 DN Road, Fort, Mumbai-400 001

State Bank of India, Gateway of India Branch, Ramnini, 8 Mandlik Road, Colaba, Mumbai-1

Standard Chartered Bank, 90 MG road, Fort Mumbai 400 001

Mumbai Mobile Creches is registered under Section 25 of the Company Act Regn No. U80101MH2006NPL164821. Mumbai Mobile Creches is registered with Income Tax Department under section 12A Nr. 40472. Donations exempt from Income Tax U/S 80-G of the Income Tax Act 1961. We have received a registration number 083781225 under the Foreign Contribution (Regulation) Act, 1976.

**V. FRIENDS AND FUNDRAISING****a. Volunteers**

Volunteers are an integral part of the MMC fabric, bringing energy, ideas, skills and creativity to our programme and dedicating their time and effort to the cause of helping children living on construction sites to lead a happy, healthy and educated childhood. We are truly grateful to our volunteers for their commitment and innovation – supporting MMC's development.

We thank our many volunteers who came to our centres to meet the children and to learn more about our programme. A big thank you to Sarah Drysdale, from Mumbai Connexions, who ran a voluntary English programme at our Agripada Centre for 3 years – we do appreciate the amazing work she has done with our children. Scot Hoffman and Tash McCarroll continue to run a robust photography project with the children – taking photos of children at all of our centres and gifting the framed photos to them. Teresa Schumacher and Natasha Dubash volunteered at our Agripada Centre and the children and staff enjoyed getting to know them and benefitting from their help. We would like to thank Ms Madhuri Pai, who has been volunteering at our Patlipada centre for over 10 years and conducting English lessons with the children there.

Mr Ashok Mahadevan, one of our Directors, conceived a unique way of raising funds. Combining his love for adventure with his devotion to Mumbai Mobile Creches, he decided to climb Mount Kilimanjaro and informed his many friends and relatives of his

intention, asking each of he could contribute Rs.1 for every metre that he climbed. The climb was much more arduous than he anticipated, but remembering the unvoiced commitment he had made, he overcame his exhaustion and pains wand reached the summit, even though he knew he had to begin the decent immediately because of inclement weather. His friends pitched in enthusiastically and over eight lakhs were raised for Mumbai Mobile Creches.

We are most grateful for the support received from Ms. Anjal Malkani, Mr. Anantharaman, Mr. Nirav Modi, and Mr. Rajat Gupta through GiveIndia. Their support has ensured smooth functioning of our programmes.

Among our friends, special mention must be made of Guenther and Karla Pankoke. For years they have spread the word (reinforced by photographs and videos) about MMC to the children of schools in their hometown. With them and the staff of their schools, they have organised fairs which help to raise an incredible amount for us. What is more important is that these children, will we hope, maintain their interest in MMC even after leaving school.

Brigitte and Bert Faerber, established an organisation for helping MMC after returning to Germany, and continue to send us funds every year. We know that they do all that they can to raise these funds in a manner that make it easy for their friends to contribute, and we are truly grateful.

Eva Linz has continued to support MMC, taking a personal interest in the work she is sponsoring. Every year she comes to India and pays a visit to the centres she is funding.

We thank Ute and Michael Thiemann for help in spreading awareness and raising funds for our cause.

We are very appreciative of Ava Shapiro, World Partners Fellow from the American Jewish World Service (AJWS), for her invaluable contribution to MMC during her volunteering stint.

We place on record our gratitude to Mr. P. N. Parekh, of Parekh and Associates, for his association & advice with regard to compliance matters.

We could not have managed without the help proffered to us by Mr. Shirish Rahalkar and Ms. Padmini Khare of B.K Khare & Company, in advising us on relevant accounting procedures.

We also thank our corporate partners– AFL, The American School of Bombay, DHFL, Johnson Controls, Macquarie Capital Advisers (India) Pvt. Ltd., Macquarie Capital Securities (India) Pvt. Ltd and Tata Motors who ran the marathon for our cause.

## b. Financials

### Detailed Income and Expenditure for the period 1.04.2010 to 31.03.2011

Income	Rs	Expenditure	Rs
Donations received		Administration	1,661,268
- Contractors	54,30,761	Field Programme	1,62,55,817
- Child Sponsorship	12,000	Indirect expenses	38,760
- Individual	2,87,353	Special Projects	1,64,447
- Individual( Foreign)	70,000	Fund raising	2,20,658
- Organisation	3,17,081	Coro Lookdoot Expenses	4,948
- Special Project	2,10,000		
Donation for specific purpose (extent utilised)	5,07,368	Depreciation	50,493
Coro Lokdoot	4,948		
Interest income	19,34,733		
Other Income			
- Extension Service	82,242		
- Fund Raising	20,99,573		
- Non Formal Education	34,900		
- Sundry Income	77,433		
-Training	30,000		
Grants Foreign (extent utilised)	39,70,621		
Grants Indian (extent utilised)	45,57,599	Excess of income over expenditure	1,230,221
<b>Total</b>	<b>19,626,612</b>	<b>Total</b>	<b>19,626,612</b>

### Abridged Balance Sheet as on 31.3.2011

2009-10 (Rs)	Funds & Liabilities	2010-11 (Rs)	2009-10 (Rs)	Property & Assets	2010-11 (Rs)
1,57,99,476	Corpus Fund	23,263,468	566,607	Fixed Assets (acquired out of equipment fund)	611,585
566,607	Equipment Fund	611,585	82,726	Fixed Assets	167,224
11,138,242	Special Purpose Fund	11,921,775	22,124,416	Investments	30,087,622
3,835,459	Accumulation Fund	54,64,512	1,828,934	Current Assets	2,021,636
1,209,209	Approved Project Grants	4,560,664	8,674,154	Cash & Bank balances	12,984,159
727,844	Income and Expenditure Account	50,222			
<b>33,276,837</b>	<b>Total</b>	<b>45,872,226</b>	<b>33,276,837</b>	<b>Total</b>	<b>45,872,226</b>



## Receipts and Payment

Receipts	Rs	Payments	Rs
Opening Balance		Fixed Assets	1,34,991
- Cash	33,603	Fixed Assets acquired out of fund	1,72,825
- Bank	86,40,550	Investments	1,01,70,683
Corpus Fund	74,63,992	Special Purpose Fund	4,92,881
Investments	22,07,477	Current Liabilities	18,82,489
Special Purpose Fund	13,23,820	Administration expenses	10,09,800
Current Liabilities	10,46,564	Approved Project Grants	
Refund of Administration exp	100	- Grants (Foreign)	39,73,620
Approved Project Grants		- Grants (Indian)	43,85,442
- Grants (Foreign)	59,82,361	Special Project	1,64,447
- Grants (Indian)	54,28,522	Coro Lokdoot	4,948
Donation Received		Other Current Assets	3,12,738
- Contractors	54,00,817	Field Programme Expenses	70,75,367
- Coro Lokdoot	4,948	Fund Raising	2,20,658
- Child Sponsorship	12,000	FC Individual Nutrition	70,000
- Individual	2,87,353	Foreign Interest utilised (Salaries)	2,44,429
- Organisation	3,17,081	Closing balance	
- FC Individual	70,000	- Cash	18,460
- Special Project	2,10,000	- Bank	1,29,65,698
Refund of Field Programme exp	81,318		
Interest Earned	17,14,718		
Other Current Assets	7,50,104		
Other Income			
- Extension Service	82,242		
- Fund Raising Income	20,99,573		
- Non Formal Education	34,900		
- Sundry Income	77,433		
- Training	30,000		
<b>Total</b>	<b>4,32,99,476</b>	<b>Total</b>	<b>4,32,99,476</b>

### c. List Of Donations

The management of Mumbai Mobile Creches is grateful to the management at The Indian Hotels Company Ltd, for having provided an office on a gratuitous basis and continuing to extend their patronage.

We are also grateful to Mr. Rasheid Taleyarkhan for allowing MMC to run our annual children's camp at the JJ Nursing Association's beautiful campus in Marve. The camp is such a pleasant respite for our children, who are otherwise surrounded by the sordid sights of the construction site. The joy that it brings to the children expresses our gratitude better than any words.

### i. Child Sponsorships

Biyash Abhiraj Choksey
Chaitali Kaduskar

### ii. Donations: Individuals & Others

Aarti Nirmal Narang	Bina Thadani	Dr. R.D. Ravindran
Abhishek Pillai	Bridgette and Bert Faber	Dr. S.N. Idnani
Abraham Eapen	C.S. Batibrolu	Dr. Usha Omprakash
Aiylam Krishnan	Captain B. Sreekumar	Eddie Umrigar
Ajay Shukla	Charles Desouza	Elisabeth Luhke
Alka Deshpande	Chitrapu Varada Raju	Erika Rube
Alok Aggarwal	Commodor Uday Bhaskar	Erika Thea Kinetz Prevete
Aloo Homi Vesuwalla	Darius Rafaat	Eva Linz
Amar Brijkishore Gupta	Deepak Singh	Familie Bischoff
Amit Bhat & Upendra	Deven R. Kanal	Felix Nussbaum Schule
Amita Samant	Devika Mahadevan	Firdaus J. Gandavia
Anailita Irani	Devleena S. Majumder	Forum Nagori
Ananjan Mitter	Dina Khandalawale	Frau Regina Brandes
Angelica Jacob	Dr. Ameet Pispati	Gaurav Manik
Anita Veeramani	Dr. and Mrs. Avi Almeida	Goolshireen Rafaat
Ardeshir B.K. Dubash	Dr. Aravind	Gopi Badlani
Aroon Purie	Dr. Balakrishnan	Guenther & Karla Pankoke
Arvind Bhawe	Dr. Dietrich Gentzen	H. Alvermann
Ashok Mahadevan	Dr. Janaki Mahadevan	Haehn Schule
Atambir Singh Rao	Dr. Kim	Hariharan Balakrishnan
Baman K. Mehta	Dr. N.V.Prajna	Herrn Rudi Wiederhoft
Basanti Didwania	Dr. Narges Mahaluxmivala	Inca Ghosh
Bhavana T.S.	Dr. Neerja Takkar	J.J. Dordi
Bijoya Dhall	Dr. Pareshnath Paul	Jean Crasto

Jehangir R. Patel	Neetu Watumull	Savak B. Daboo
Jessica Mahadevan	Neha Soni	Shaila Shriniwas
John Arunkumar Diaz	Nikhil Bhavankar	Shanaya Rafaat
Jorg Muller	Nikhil Kumar	Sheila Botawalla
Judge Kamaljit S.Garewal	Nikital Atal	Sir Vithaldas Thackerey
Jyoti C. Sali	Nilaufer Patel	Sivasankan Chandrasekaran
Kaiyomarz Daver	Nilima Mitter	Somasunder Burra
Kamala Thiagarajan	Nillofer Kaiomarz Balsara	Sonal Patel
Kapil Gupta	Nilufer Charna	Sudha Bhawe
Karthik Mahadevan	Nissim & Elkana Ezekiel	Sunanda Nayak
Kashyap Bipin Barai	Oskar-Kammer-Schule	Suneet Yogesh Kothari
Kavitha M. Rao	Padmavathi Subramanian	Sunil Guraji
Kiran D. Patki	Pallavi Navin	Sunil Gurnani
Lavi M. Kumar	Paritatischer Kindergarten	Sunita Barua
Leela Nair	Phirooza Siganporia	Surekha Badve
Leena Patki	Phiroza D. Muncherjee	Sushila S. Pahlajani
M.A. Parameswaran	Pradeep Saxena	Swapna Pingle
Madhavankutty Pillai	Pradyat Kumar Ghosh	Ursula Bhattacharjee
Mahender Nathan	Pragna Maniar	Ute & Michael Thiemann
Mamta Sharma	Prema Iyer	V. Rajagopalan Menon
Margaret Mehta	Prema Nair	Vaishali Deodhar
Martina Sommerfeld	R.D. Thulasiraj	Varsha S. Mehta
Maseeh Rahman	Rahul Bedi	Veena V. Shingrani
Meenakshi Mithal	Rajeev D. Ohol	Veera Jehangir Patel
Meher Rafaat	Rajini	Vijay Kalanjee
Mehroo Charna	Ram Vaswani	Vijay Runganadhan
Mohan Sivanand	Rashida J. Cursetji Mendu	Vikram Shewah Pahlajani
Mr. Sriram	Ratika Mehta	Vilasani Menon
Mrinalini Kochar	Rekha Menon	Villie Daruvala
Mrs. A. Fischer	Rima Sinha	Vishnu Prasad
Mrs. Sathwanth	Rishad Premji	Vishwanath Giriraj
Ms. Kuhu	Roopesh Pathania	Vorbruck Kindergarten
Ms. Saroja	Rupali Anil Chetty	Vrushali Sameer Naik
Mudavkkat Girish Menon	Sameer Naik	Yasmin Rangwala
Mustafa Yalcinkaya	Sanjana Kanddwal	Yatish Kumar Satija
Nalini M. Chhugani	Sanjay Gothi	Yusuf & Freny Tayebjee
Natasha Gupta	Sanjay Sohani	Zaal & Maheen Vasania
Natesan V. Iyer	Sanjiv Misra	Ziaa Lalkaka
Navaz Cursetji	Saroj Satija	
Neeta Patkar	Satyendranath N. Bhat	

### iii. Donations and Earmarked Grants: Organisations (Trusts and Foundations)

Agyawanti H. Aggarwal Charity Trust	Kalpataru Trust
American School of Bombay	Kashinath Charitable Trust
Amrit Vasudeva Trust	Kherwadi Social Welfare Association
Anglo American Charitable Foundation	Macquarie Group Foundation
Bala Mandir Research Foundation	Mobile Krippen
Bhaichand Mehta Foundation	Monica Rabagliati Trust
Breach Candy Swimming Bath Trust	National Centre for the Performing Arts
Central Social Welfare Board	Premdhara Strom der Liebe e.V.
Charities Aid Foundation India	Primeway S.A.
Child Vikaas International	Ram Batra Memorial Foundation
Concern India Foundation	Rotary Club of Bombay North East Charitable Trust
CORO	Sadguru Kamubaba Foundation
Disha Foundation Trust	The Bombay Community Public Trust
Doshi Foundation	The British Asian Trust
École Mondiale World School	The Marg Foundation
EdelGive Foundation	The Global Fund for Children
Galli Galli Sim Sim Educational Initiative	The X'mas Fund
Garware Charitable Trust	The Public Charitable Trust
GiveIndia	United Way of Mumbai
Gundecha Charities	United World College of South East Asia
Inner Wheel Club of Bombay Airport	Vile Parle Mahila Sangh
iPartner India	Western Union Foundation
Jamsetji Tata Trust	

#### iv. Donations and Earmarked Grants: Corporates

ACC Ltd	Macquarie Capital Securities (India) Pvt. Ltd.
AFL Private Ltd.	Naath Industries Pvt. Ltd.
Bharat Petroleum Corporation Ltd	Nomura Financial Advisory & Securities (India) Pvt. Ltd.
B.K. Khare & Co.	Parle Products Pvt. Ltd.
Camelot Trading Pvt. Ltd.	Samsara Fund Advisors Pvt. Ltd.
CHIP Shine-On	Serie, Mumbai
CIPLA Ltd.	Shapoorji Pallonji & Co. Ltd.
Consolidated Marine Services	Spearhead Corporate Services Pvt. Ltd.
Credit Suisse Securities (India) Pvt. Ltd.	Streamline Shipping Co. Pvt. Ltd.
Five Stars Bulk Carriers Ltd.	Tata Capital Ltd
Five Stars Shipping Co. Pvt. Ltd.	Tata Communications Ltd.
Godrej Properties Ltd.	Tata Industries Ltd.
Hager Electro Pvt. Ltd.	Tata Investment Corporation Ltd.
IL&FS Investment Managers Ltd.	Tata Motors Ltd.
Johnson Controls (India) Pvt. Ltd.	Tata Sons Ltd.
K. Raheja Corp Pvt. Ltd.	The Boston Consultancy Group
Kolk and Kolk Design	The Tata Power Co. Ltd.
Macquarie Capital Advisers (India) Pvt. Ltd.	Voltas Ltd.

#### v. Donations in Kind (Individuals)

A. Sahay	Aditya Agrawal	Amie Bafna
Aarav Seth	Ajay Kalyankar	Amit Adarkar
Aarti Jain	Ajay Kapur	Amit Gupta
Aayush Nair	Akilesh Pillai	Ammita Patkey
Abeer Agarwal	Akshay Jain	Anamika
Abhijit Sawant	Akshay Wadhwa	Anand Goyal
Aditi Nehal	Aman Talwar	Anima Mohanty

Anita Gambhir	Dahlia Sengupta	Harish Chandra
Anita Gamble	Daksha Pandit	Harshavardhan
Anita Pandey	Daya G. Gogawaie	Heena Nandita
Ankit Agarwal	Debarati Pal.	Hemanshu Sharma
Ankit Aggrawal	Deepak Matta & Family	Himanshu Sharma
Ankit Aman Sharma	Deepak Singh	Hina Agrul
Ankita	Deepali Matta	Isha Yoga
Ansh Kapdiya	Deepika Surendran	Ishaan Hadkar
Anureet Sethi	Deepti Acharya	Ishika Menrai
Anush Bhatra	Deva Jyotula	Ishika Mistry
Anusha Ravi	Devika Mahadevan	J.K. Bhatia
Aparna	Dheeraj Gawade	Jairaj Pamnani
Aparna	Dimple Bajaj	Jana Mahadevan
Archana Junnarkar	Dimpy Mann	Jayant Joshi
Archana Modi	Dinesh Gadade	Jessica Mahadevan
Arisyan Bagnuoli	Dipali Desai	Jigisha Vora
Arsh Kapadia	Disha Nirmal	Joyeeta Dutta
Arti Vakil	Dr. Neerja Takkar	Jyoti
Aruna Rajnikant Aundhalkar	Dr.Banerjee.	Jyoti C. Salvi
Asha Matta	Dr.P.S. Rama Krishna	K.Saraf
Ashwini A Munde	Dr.Shukla	Kamini Kapadia
Asit Desai	E. Eshwar & R. Nair	Kamini Sinha
Avanti Birla	Ekaavsh Saxena	Kanak Sharma
Ayank Verma	Ekta Talwar	Kanta Kirti Nansi
B.R. Bahal	Ekta Trivedi	Kapisary
Babu Chinnkonda & Family	Erika Kinetz	Karla
Baby P.S. Krishna	Farida Punawala	Kate Zabler
Bajaj A.	Farzana Thakur	Kausalya N
Bebarati Pal	G. Kaur	Kausalya Narayanan
Bhagyashree H. Pathak	Gaurav Kumar	Kaushalya J.
Bharthi	Gaurika Chandhok	Kavita Dewan
Bhaskar Kamat	Gaurish Arora	Kavita Mehta
Bhavish Kaku Shah	Gautam G.	Kavita Rao
Bina Agarwal	Geeta	Kavitha Rao
Binnu Kulshresht	Georgina Fernandes	Kersi F. Pastakia
Caren	Girija Menon	Ketki Prabhat
Carol	Gondals	Ketna Shetty
Chirag Chavan	Gurpreet Kaur	Kiran Mai Anupinda
Chirag Chawala	H. Hinduja	Ksharma Hadkar
Crissi Mann	Hansa Bhatia	L.B. Bajaj



Lalit Manchanda	Naresh Patil	Rahul Kadam
Lalitha Khan & Sajid Khan	Natasha Dubash	Raj M Walawalkar
Lara Varma	Natasha Gupta	Rajan Gaonkar
Lata Varma	Navin & Simran Matta	Rajesh Iyer
Laui M. Kumar	Neeraj Katare	Rajni Kelkar
Lona Lobo	Neerja Mann	Rakesh Karla
Lt R.S. Chopra	Nikita Desai	Rakesh M.
M Ranganath Iyer	Nikita Kohali	Rakhi .A.S.
M. Mistry	Nilu Agarwal	Ram D.K.
M.K. Shukla	Niraj Kiritbhai Vaishnav	Ranjana R.N.
M.S. Venkateswaran	Nita Ahluwalia	Ranjeet & Krish
Madrac K.	Nitya Varma	Ranjeet Ahuja
Mahalakshmi	P. Mirchndani	Rashida
Mahindra Satra	Panchal & Family	Rashmi
Malini Kalra	Piyush Agrawal	Rashmi Shetty
Malini Kumar	Pooja Gupta	Ratnakar Patil Surash
Malti Thakar	Poonam	Ravee Datta
Mangesh Puranik	Poonam Gidwani	Ravi D
Manish Sawant	Poornima J.	Ravi Dasari.
Manjula	Poorvi N.	Ravi Kapoor
Maya Hinduja	Poulami Biswas	Rebecca & Jo
Mayank Pandey	Prabha Vaid & Vijay Vaid	Reema Bhatia
Mechl Chopu	Prachi	Reena Sinha
Mitasha Sharma	Pramila Bhatia	Reeta Samant
Mohan Chawla	Pranalee	Reetu Mathur
Mohana Kausalya & Priya S.	Pranav	Rekha Bhoir
Mona & Shashanka Sharma	Prasad Jangam	Rekha Menon
Mr. Bajaj	Pratiksha & Purnima	Rekha P. Nikharde
Mr. Mahendra	Preeti Jain	Renu Kumar
Mr. Shukla	Priti Bose	Rita Mehta
Mrinal Desai	Priyank Singh & Soma Singh	Rita Mehta
Mrs. Raj Kochar	Puja Ahuja	Ritu Bansali
Mrs.Gupta	Purn Sadrangini	Ritu P.
Mrs.Tiwari.	Purnima	Ritu Wasan
Mrs.Usha. Kaura.	Purvi Chandresh Shah	Robert
Ms.Khodaiji	Pushpa Joshi	Rohini S.
Mugdha Tayde	R. Singh	Roli Gupta
Nalini Chhugani	R.S. Chopra	Ronny Soni
Nalini Desai	Radhika Agarwal	Rubin Thomas
Nandita Ravat	Rahen Poonawala	Ruchi Kishore

Rumana Hamied	Shiva Aggrawal	T. Mahadevan
Rupali Ravuri	Shobha Sadhwani	Tara sehgal
Ruta Samant	Shonit Kichloo	Tripti
S. Ahmed	Shrikrushn Jaywant Dalvi	Trisha Satra
S. Gupta	Shweta	Uma Agarwal
S.C. Abbi	Shammi Sadhwani	Uma Vinay Kumar
Sai Smithi & Sai Smruti	Shanta Hegde	V. Boxwala
Sakshi	Shanti Agarwal	V. Vishwanathan
Salil Manjrekar	Sharang Iyer	V.K. Khosla &
Sangeeta Pandit	Shaurya Khandelwal	Veena Khosla
Sangita Vaidynathan	Shazia Andharujina	Vala A.
Sanjay Bhatiya & Shantiv Bhatiya	Sheela Balsekar	Vandana Gosani
	Shefali S.S.	Vandana Gupta
Sarang C.	Snehal P	Vandana K.
Sarita Chandra	Soma	Vandana Talwar
Sarita Gupta	Sonam Gidwani	Veena Kuwalekar
Satwant	Sonia Gholap	Vidhya Seetharaman
Seema Panhalkar	Sudha Patel	Vijaya Bhaskar Bhoir
Seema Sahai	Sultana Gopal Krishnan	Vikas Chaudhry
Sejal D.	Sumeet Rametra	Vilasani Menon
Sejal Mehta	Sunaina Patel	Vinita Dudia
Seth Berjeson.	Sunita Mann	Vinod Nair
Shalee & Amu Deepak	Suryaditya Nair	Vipul B.
Sham Wadhu	Suryawanshi	Vishal Sharma
Shilpa Goyal	Sushma Gupta	Vrushali
Shipra Bhatia	Swati Kalra	Vrushali Naik
Shiva Agarwal	Sweety Jain	Yukti Mittal

#### vi. Donations in Kind (Corporates & Others)

A.C.C. Ahead	Hiranandani Ladies Club
American School of Bombay	Hopping Bunnies
B.G. Shirke Construction Technology Pvt Ltd	HSBC
Bombay Scottish School	Inorbit Group
Cactus Communication Pvt. Ltd.	Johnson Control (I) Pvt. Ltd.
Chandresh Lodha School	Kalpataru Heights Ladies Association
Concern India Foundation	Karmayog
Convergys Corporation	Lodha Group
DDI India Pvt. Ltd.	NYK Line
EdelGive Foundation	Pratham Books
Fazlani L'Académie Globale	Prayas Foundation
Gennext Hardware & Parks Pvt. Ltd.	Renaissance Hotel
Glenmark Pharma	SW Samarth Yog Osawal
Hiranandani Foundation School	Toy Bank

**d. Names and Addresses of the Centres run in 2010-11**

1	Room No. 481, Darga Road, Khindipada, Bhandup Complex, Mulund (W).
2	H.C.C., Hiranandani Gardens, Next to BMC Health Post, Opp. BG India Building, Powai.
3	Room No. 49, Korba Mithaghar, Ramamata Wadi, Opp. Wadala Police Chowk, Wadala (E).
4	Raheja Vihar, Opp. Chandivali Studio, Farm Road, Next to Bombay Scottish School, Chandivali.
5	Hiranandani Estate, Patlipada, Ghodbunder Road, Thane.
6	BPCL, Mahul, Near Servants' Quarters, Mahul.
7	Kalpataru Gardens, Neo Pharma, Military Camp, Opp. Kamgar Hospital, Kandivali (E).
8	Mayfair Virar Garden, Kharodi Naka, Agashi Road, Virar (W).
9	Lodha Paradise, On Eastern Express Highway, Next to Majiwade Flyover, Thane (W).
10	Neptune Living Point, L.B.S. Marg, Near Mangatram Petroleum, Bhandup.
11	Kalpataru Aura, Near Durgah, L.B.S. Marg, Ghatkopar (W).
12	Gundecha Symphony, Next to Chitralekha House, Veera Desai Road, Andheri (W).
13	K. Raheja Corp., Hindoostan Viving & Spinning Mill, Jacob Circle, Agripada, Mahalaxmi (E).
14	B.G. Shirke Construction, Pratiksha Nagar, Near Pratiksha Nagar Bus Depot, Sion (W).
15	B.G. Shirke Construction, Ganesh Nagar, Yard No. 2, Behind Malad Fire Station, Malad (W).
16	Gundecha Heights, Opp. St. Xavier's School, L.B.S. Marg, Kanjur Marg (W).
17	B.G. Shirke Construction, Hind Mill Compound, Cotton Green Station (W).
18	Mahindra Splendour (Billimoria), GKW Co. Compound, L.B.S. Marg, Bhandup.
19	B.G. Shirke Constructions, Survey No. 6/1, Turbhe-Mandale, Mankhurd (E).
20	K. Raheja Universal, Raheja Reflection, Plot No. 148, CTS No. 168, Borivali (E).
21	Rustomjee Elanza, Near Inorbit Mall, Behind Evershine Building, Malad (W).
22	Nahar Amrit Shakti, Next to Callalily Building, Chandivali, Andheri (E).
23	Rustomjee Evershine Global City, Narangi Bypass Road, Labour Camp, Virar (W).
24	B.G. Shirke Constructions, Ashok Nagar, Kandivali (E).
25	K. Raheja Corp., Mindspace, Opp. Airoli Station (E), Navi Mumbai.
26	Sathyanagar Housing Project, Ranishigaon, Boisar (E), Thane.
27	B.G. Shirke Constructions, Uran Road, Ulwe, Sector 12A, Navi Mumbai.
28	Ackruti Niharika Project, Saiwadi, Andheri (E).
29	Ackruti City, Vartak Nagar, Thane (E).
30	Neelkanth Business Park, Near Vidyavihar Station (W), Mumbai.
31	K. Raheja Corp., Airport Road, Sahar, Andheri (E).
32	Lodha Casa Bella, Kalyan Sheel Road, Dombivali (E), Thane.
33	Unitech-Shivalik Ventures, Golibar Road, Santacruz (E).
34	B.G. Shirke Constructions, MHADA-Shimpoli Project, Borivali (W).



## **Mumbai Mobile Creches**

1st Floor Abbas Building

Mereweather Road

Colaba Mumbai 400 001

Phone : 022-22020869 or 32457774

Email: [contact@mumbaimobilecreches.org](mailto:contact@mumbaimobilecreches.org)

Website: [www.mumbaimobilecreches.org](http://www.mumbaimobilecreches.org)